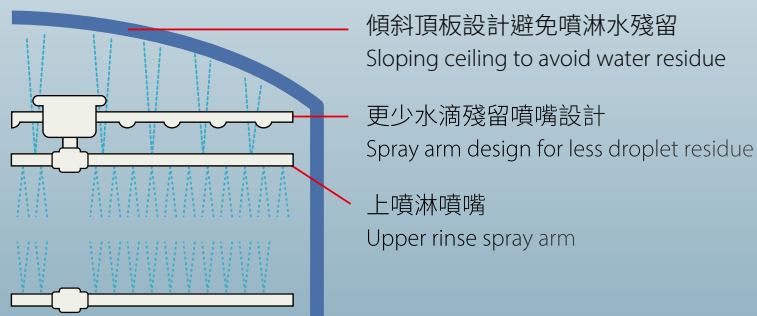


洗碗碟機

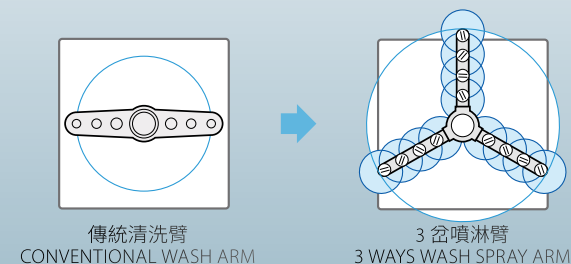
DISHWASHER



減少洗碟後水滴殘留 Reduces residue of water droplets after dishwashing



與傳統的清洗臂相比 Compare to conventional wash arms



型號 MODEL	HW-600A	
電壓 Power Supply	三相四線制 380V 50Hz 3 Phase 4-wire 380V 50Hz	
用電量 Heater (w)	3000W (清洗)	12000W (洗滌)
時產量 / 籃 Capacity (Racks /hr)	48 Racks /hr	
盛籃尺寸 - 濶 × 深 Rack - W × D (mm)	500 × 500 mm	
洗滌模式 Cycle Time	64s (清洗 Wash 48s, 停頓 Dwell 5s, 洗滌 Rinse 10s, 停頓 Dwell 1s)	
洗滌系統 Wash System	上下旋轉臂 Upper and Lower Rotary Arms	
尺寸: 濶 × 深 × (高 + 腳) Dim.: W × D × (H + legs) mm	615 × 718 × (1355 + 130) 615 × 718 × (1825 + 130) Door Open	
溫度 Temperature (° c)	65°c (清洗 Wash)	85°c (洗滌 Rinse)
功率 Electric Consumption (w)	16000 W	

