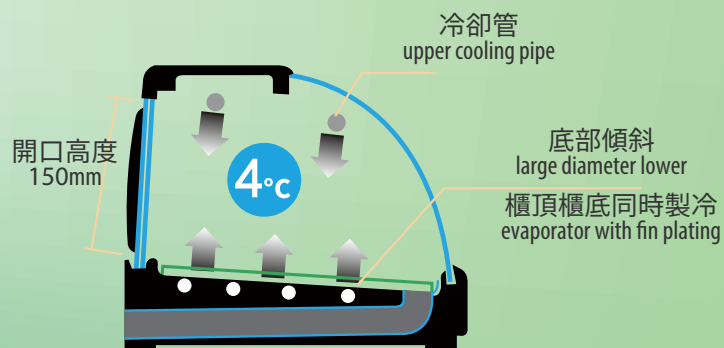


銀星不銹鋼工作台系列

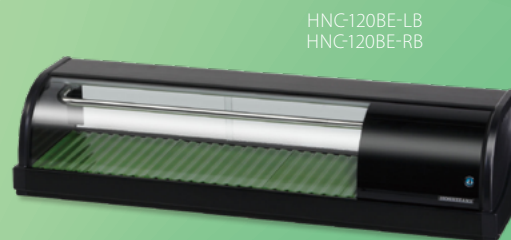
A-FIT STAINLESS STEEL COUNTER SERIES



■ 可選擇冷藏位置 (由廚師的方向)
Option Of Refrigeration Position (from chef prospective)



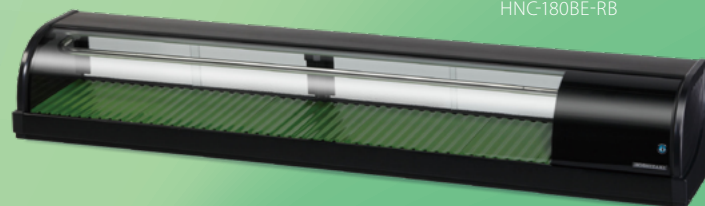
■ 內部通風 Internal Ventilation



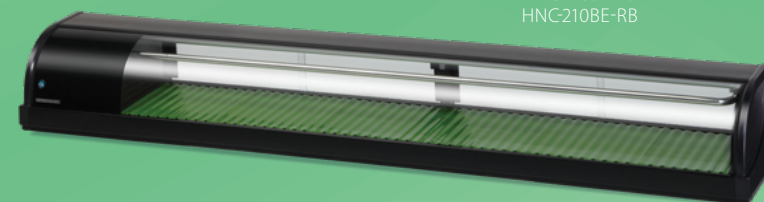
HNC-120BE-LB
HNC-120BE-RB



HNC-150BE-LB
HNC-150BE-RB



HNC-180BE-LB
HNC-180BE-RB



HNC-210BE-LB
HNC-210BE-RB

壽司展示櫃 Sushi case L-TYPE(LB): 左壓縮機方向 Condensing unit on left; R-TYPE(RB): 右壓縮機方向 Condensing unit on right

型號 MODEL	HNC-120BE-LB	HNC-150BE-LB	HNC-180BE-LB	HNC-210BE-LB
	HNC-120BE-RB	HNC-150BE-RB	HNC-180BE-RB	HNC-210BE-RB
功率 Electric Consumption	150 W	150 W	150 W	150 W
有效容量 Storage Capacity	42 L	57 L	72 L	87 L
外尺寸: 潤 × 深 × 高 Outside Dim.: W × D × H mm	1200 × 345 × 270	1500 × 345 × 270	1800 × 345 × 270	2100 × 345 × 270
內尺寸: 潤 × 深 × 高 Inside Dim.: W × D × H mm	845 × 288 × 157	1145 × 288 × 157	1445 × 288 × 157	1745 × 288 × 157
玻璃趟門 Glass Sliding Door (WxD) mm	2pcs (435 × 172)	4pcs (293 × 172)	4pcs (368 × 172)	4pcs (443 × 172)
電壓 Ac Supply Voltage	單相 1 Phase / 220V / 50 Hz			

※ 壽司櫃: 壓縮機方向以玻璃趟門方向 (由廚師的方向) 分左右; 右邊壓縮機需要訂造。
Compressor is on the left (from chef prospective) as standard. But can be tailor made.

▲ 應將產品放置在通風良好, 四周有足夠散熱空間和乾燥的環境中, 不可在室外使用, 避免陽光直射和遠離熱源, 溫度不能高於 24°C。如晚上未能達到 24°C 以下須關機。
This Product should install in a ventilated and dry environment. Not for outdoor use. Avoid direct sunlight. Ambient temperature should not be higher than 24°C. Shut down the machine if ambient temperature is higher than 24°C overnight.