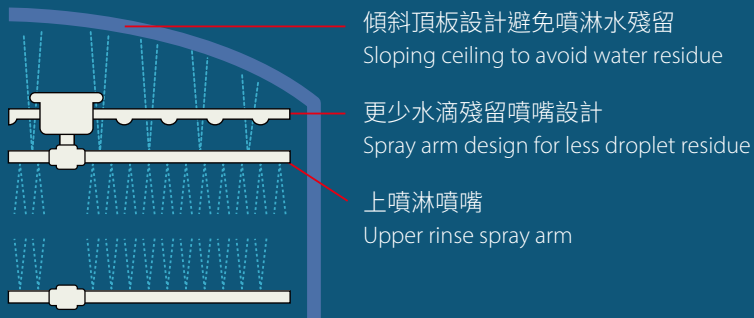


洗碗碟機

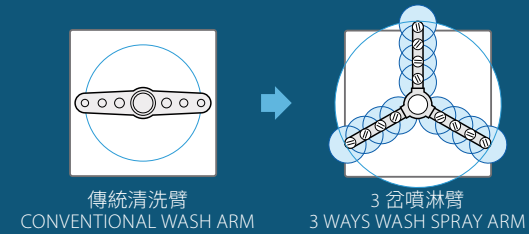
DISHWASHER



減少洗碟後水滴殘留 Reduces residue of water droplets after dishwashing



與傳統的清洗臂相比 Compare to conventional wash arms



| 型號 MODEL | HW-600A | |
|--|--|-----------------|
| 電壓 Power Supply | 三相四線制 380V 50Hz 3 Phase 4-wire 380V 50Hz | |
| 時產量 / 籃 Capacity / Racks (hr) | 48 | |
| 盛籃尺寸 - 濶 × 深 Rack - W × D mm | 500 × 500 | |
| 洗滌模式 Cycle Time | 64s (洗滌 Wash 48s, 停留 Dwell 5s, 噴淋 Rinse 10s, 停留 Dwell 1s) | |
| 洗滌系統 Wash System | 上下旋轉臂 Upper and Lower Rotary Arms | |
| 尺寸: 濶 × 深 × 高 mm Dim.: W × D × H mm | 615 × 718 × 1485 (1485~1535) | |
| 開門高度 Door opening height mm | 445 | |
| 溫度 Temperature | 65°C (洗滌 Wash) | 85°C (噴淋 Rinse) |
| 功率 Electric Consumption | 16000 W | |
| 重量 weight | 105 kg | |