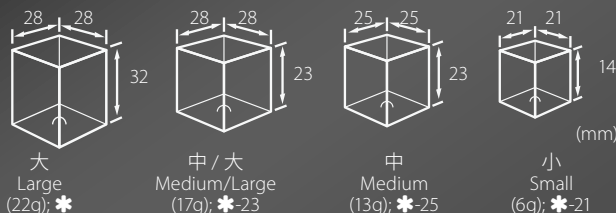


方形冰粒製冰機系列

ICE MACHINE SERIES - ICE CUBE (IM SERIES)



* = 型號 Model No;
數字代表冰粒大小
The number represents the size of ice



IM-30CNE
IM-30CNE-25

IM-45NE
IM-45NE-25

IM-45CNE
IM-45CNE-25

IM-65NE
IM-65NE-25

IM-100CNE
IM-100CNE-23

IM-100NE
IM-100NE-23
IM-130NE
IM-130NE-23

IM-240NE
IM-240NE-23

IM-240ANE
IM240ANE-23

一體式製冰機 Self Contained Type

型號 MODEL	IM-30CNE IM-30CNE-25	IM-45NE IM-45NE-25	IM-45CNE IM-45CNE-25	IM-65NE IM-65NE-25
最大日產量 Max daily production(kg)	28 kg	44 kg	44 kg	63 kg
儲冰箱容量 Bin Capacity(kg)	24 kg	39 kg	39 kg	56 kg
儲冰箱容量 Bin Capacity(kg)	11.5 kg	18 kg	15 kg	26 kg
功率 Electric power (W)	270 W	330 W	320 W	400 W
尺寸: 潤 × 深 × 高 mm Dim.: W × D × H mm	398 × 451 × (695+90)	503 × 456 × (840+90)	633 × 511 × (690+90)	633 × 506 × (840+90)

組合式製冰機 Modular Type

型號 MODEL	IM-240ANE IM-240ANE-23
最大日產量 Max daily production(kg)	240 kg
儲冰箱容量 Bin Capacity(kg)	225 kg
儲冰箱容量 Bin Capacity(kg)	視儲冰箱型號而定 Fittable for different bin
功率 Electric power (W)	1320 W
尺寸: 潤 × 深 × 高 mm Dim.: W × D × H mm	560 × 700 × 880 560 × 820 × 1991 (w/B-301SA)

一體式製冰機 Self Contained Type

型號 MODEL	IM-100CNE IM-100CNE-23	IM-100NE IM-100NE-23	IM-130NE IM-130NE-23	IM-240NE IM-240NE-23
最大日產量 Max daily production(kg)	95 kg	95 kg	120 kg	240 kg
儲冰箱容量 Bin Capacity(kg)	79 kg	79 kg	100 kg	225 kg
儲冰箱容量 Bin Capacity(kg)	38 kg	50 kg	50 kg	110 kg
功率 Electric power (W)	630 W	630 W	700 W	1320 W
尺寸: 潤 × 深 × 高 mm Dim.: W × D × H mm	1004 × 600 × (700+100)	704 × 506 × (1200+100)	704 × 506 × (1200+90)	704 × 665 × (1510+90)

※ 上述日產量在環境溫度低於 10° C 及 入水溫度低於 10° C 下測量所得。
Test Ambient Temperature 10° C and test water temperature at 10° C

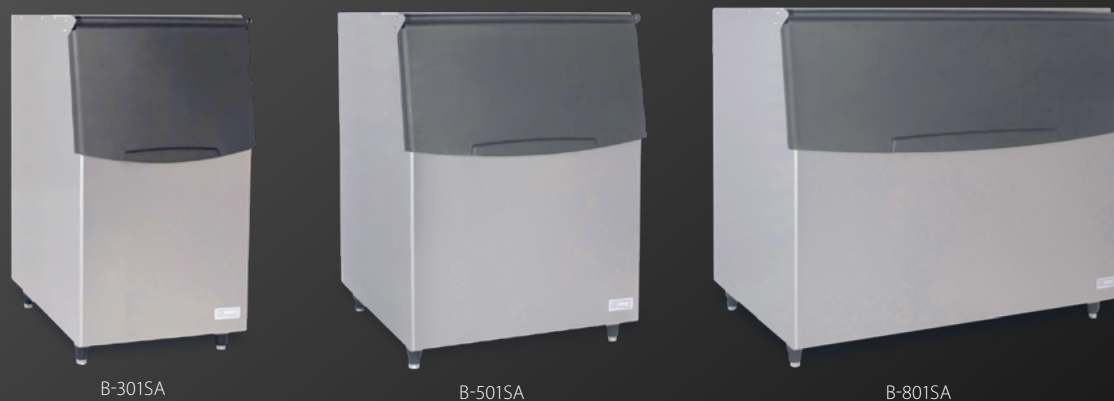
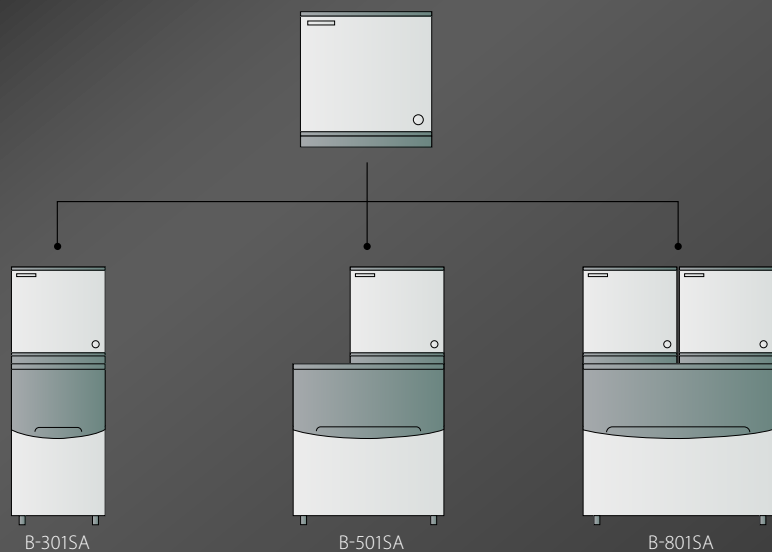
※ 交流電壓: 單相 220 V, 50 Hz
AC SUPPLY VOLTAGE: Single Phase 220 V, 50 Hz

※ 產品不斷改良, 如有更改, 均以實物為準。
Products are subject to change due to enhancements and continuous development.

※ 製冰機應使用符合飲用水標準的水源, 並安裝過濾器。
The ice machine should use a water source that meets drinking water standards and install a filter.

儲冰箱

ICE BIN



儲冰箱 ICE BIN

型號 MODEL	B-301SA	B-501SA	B-801SA
儲冰箱容量 Storage Capacity	144 kg	217 kg	348 kg
尺寸: 闊 × 深 × (高 + 腳) mm Dim.: W × D × (H + legs) mm	559 × 820 × (1016+90)	765 × 820 × (1016+90)	1220 × 820 × (1016+90)