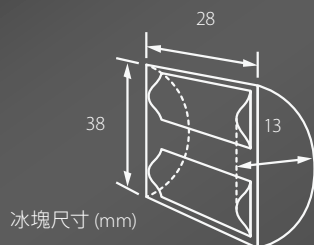


新月形冰粒製冰機系列

ICE MACHINE SERIES - CRESCENT ICE (KM SERIES)



KMD-201AB (B-301SA)
KMD-201AWB(B-301SA)



KMD-270AB(B-301SA)
KMD-270AWB(B-301SA)



KM-470AJ (B-501SA)
KM-470AWJ(B-501SA)



KM-590DJ(B-801SA)
KM-590DWJ(B-801SA)



組合式製冰機 Modular Type

型號 MODEL	KMD-201AB	KMD-201AWB*	KMD-270AB	KMD-270AWB*
最大日產量 Max daily production	200 kg	190 kg	275 kg	270 kg
功率 Electric power	663 W	604 W	984 W	925 W
尺寸:潤 × 深 × 高 mm Dim.: W×D×H mm	560×625×610 (w/o Bin) 560×820×1721 (w/B-301SA)	560×625×610 (w/o Bin) 560×820×1721 (w/B-301SA)	560×625×610 (w/o Bin) 560×820×1721 (w/B-301SA)	560×625×610 (w/o Bin) 560×820×1721 (w/B-301SA)

型號 MODEL	KM-470AJ	KM-470AWJ*	KM-590DJ	KM-590DWJ*
最大日產量 Max daily production	495 kg	495 kg	630 kg	650 kg
功率 Electric power	1850 W	1523 W	2080 W	1741 W
尺寸:潤 × 深 × 高 mm Dim.: W×D×H mm	762×695×825 (w/o Bin) 762×820×1931 (w/B-501SA)	762×695×825 (w/o Bin) 762×820×1931 (w/B-501SA)	1219×695×695 (w/o Bin) 1220×820×1801 (w/B-801SA)	1219×695×695 (w/o Bin) 1220×820×1801 (w/B-801SA)

* 帶有“W”的型號 = 水冷凝系統。
Model number with "W"=Water Cooled Condensing System.

※ 上述日產量在環境溫度低於 10°C 及 入水溫度低於 10°C 下測量所得。
Test Ambient Temperature 10°C and test water temperature at 10°C

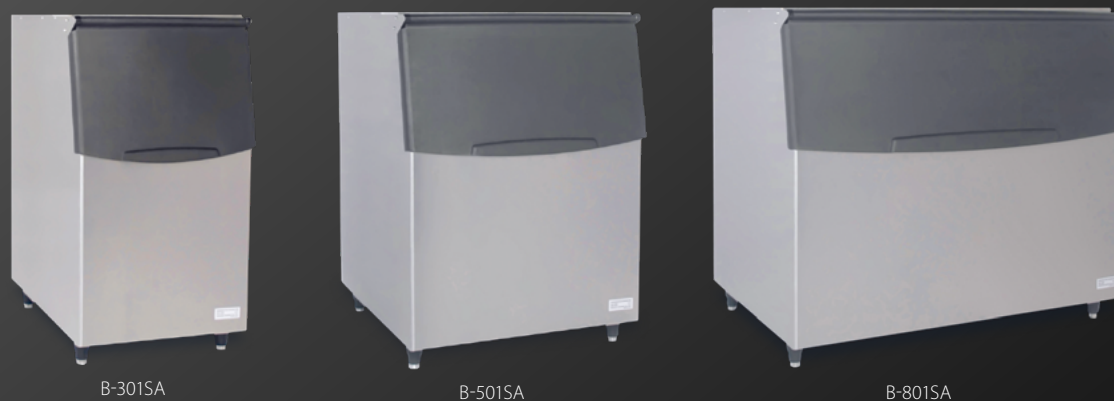
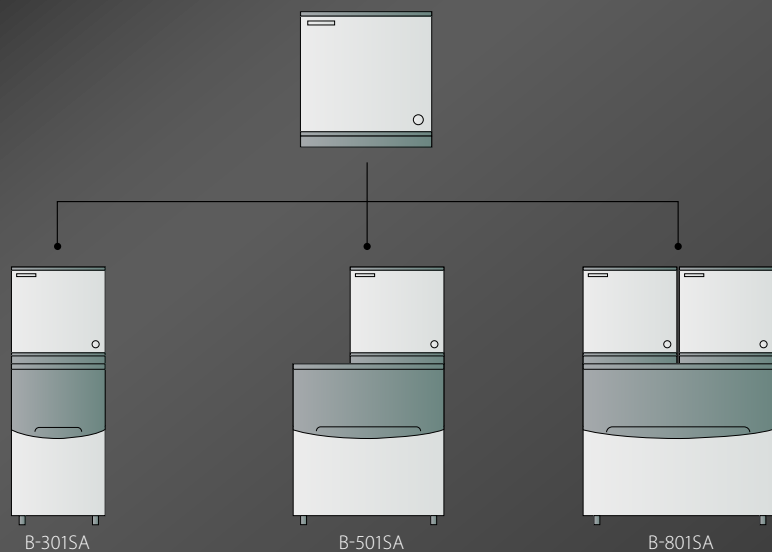
※ 交流電壓：單相 220 V, 50 Hz
AC SUPPLY VOLTAGE: Single Phase 220 V, 50 Hz

※ 產品不斷改良，如有更改，均以實物為準。
Products are subject to change due to enhancements and continuous development.

※ 製冰機應使用符合飲用水標準的水源，並安裝過濾器。
The ice machine should use a water source that meets drinking water standards and install a filter.

儲冰箱

ICE BIN



B-301SA

B-501SA

B-801SA

儲冰箱 ICE BIN

型號 MODEL	B-301SA	B-501SA	B-801SA
儲冰箱容量 Storage Capacity	144 kg	217 kg	348 kg
尺寸: 闊 × 深 × (高 + 腳) mm Dim.: W × D × (H + legs) mm	559 × 820 × (1016+90)	765 × 820 × (1016+90)	1220 × 820 × (1016+90)